



# ISDN S- INTERFACE TRANSFORMERS/ MODULES SMALL SMT PACKAGE

## ELECTRICAL SPECIFICATION @25°C

MODEL NO.	Turns Ratio (Line:Chip) (±2%)	Line Side Inductance (mH min.)	Interwinding Capacitance (pF max)	Line Side Leakage Inductance (uH max)	DCR Line Side (Ω ±15%)	DCR Chip Side (Ω ± 15%)	Schematics
UT20793-**TS	1split:1split	30	100	5	2.9	2.8	A
UT20773-**TS	1CT:1CT						B
UT20795-**TS	1split:2split	30	100	5	3.0	5.6	A
UT20775-**TS	1CT:2CT						B
UT20798-**TS	1split:2.5split	30	100	5	3.0	6.8	A
UT20778-**TS	1CT:2.5CT						B

MODEL NO.	Common mode choke									
	-00TS		-05TS		-10TS		-50TS		-5MTS	
	OCL (uH)	DCR (Ω max.)	OCL (uH)	DCR (Ω max.)	OCL (uH)	DCR (Ω max.)	OCL (uH)	DCR (Ω max.)	OCL (mH)	DCR (Ω max.)
UT20793-**TS	None		50	0.4	100	0.6	500	1.4	5.0	2.0
UT20773-**TS	None		50	0.4	100	0.6	500	1.4	5.0	2.0
UT20795-**TS	None		50	0.4	100	0.6	500	1.4	5.0	2.0
UT20775-**TS	None		50	0.4	100	0.6	500	1.4	5.0	2.0
UT20798-**TS	None		50	0.4	100	0.6	500	1.4	5.0	2.0
UT20778-**TS	None		50	0.4	100	0.6	500	1.4	5.0	2.0

Note: 1. Test Condition: Inductance : Main Transformers 10KHz 100mVrms. CMC 100KHz 20mVrms.

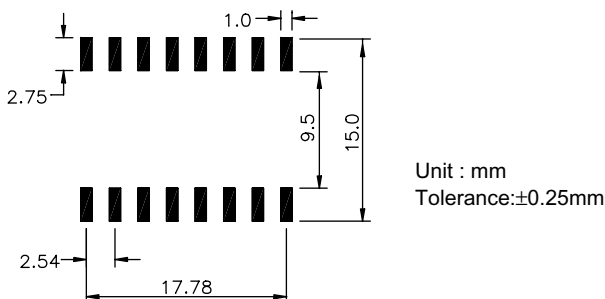
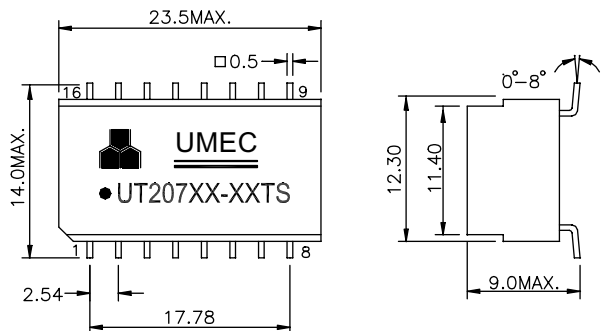
2. Leakage Inductance & Interwinding Capacitance : 100KHz 100mVrms.

3. For RoHS compliant products, the Ordering Code: TG-Model No. ex. TG-UT20793-00TS

4. Moisture sensitivity level (MSL) =4

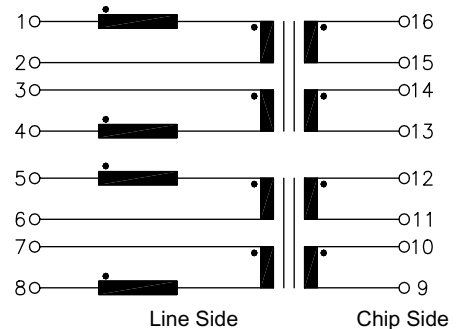


## PACKAGES & SCHEMATICS

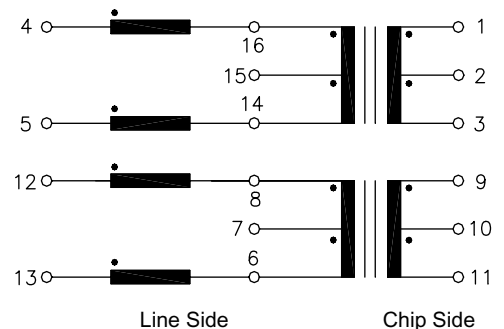


\*Specifications are subject to change without prior notice.

### SCHEMATICS A



### SCHEMATICS B



DATA SHEET 06-20 JUN./05  
2 OF 2



# ISDN S- INTERFACE TRANSFORMERS/ MODULES SMALL SMT PACKAGE

- Meets CCITT I.430 pulse waveform template and impedance Profile.
- Developed for enhanced EMC performance.
- Excellent longitudinal balance.
- Low or high frequency choke options available.
- Non-RoHS soldering peak temperature  $230\pm 5^{\circ}\text{C}$  IR Reflow.
- RoHS compliant soldering peak temperature  $245^{\circ}\text{C}(+0/-5^{\circ}\text{C})$  IR Reflow.
- Operating temperature range  $0^{\circ}\text{C}$  to  $+70^{\circ}\text{C}$
- Storage temperature range  $-20^{\circ}\text{C}$  to  $+105^{\circ}\text{C}$
- 4mA Idc Max. Permissible Unbalance DC Current.
- 2000Vrms isolation.

## TRANSFORMERS/MODULES SELECTION GUIDE

Chip Manufacturer	Chip Designation	Dual Transformer	Module With 50uH CMC	Module With 100uH CMC	Module With 500uH CMC	Module With 5mH CMC
<b>AMD</b>	<b>AM79C30A/32A</b>	<b>UT20795-00TS</b> <b>UT20775-00TS</b>	<b>UT20795-05TS</b> <b>UT20775-05TS</b>	<b>UT20795-10TS</b> <b>UT20775-10TS</b>	<b>UT20795-50TS</b> <b>UT20775-50TS</b>	<b>UT20795-5MTS</b> <b>UT20775-5MTS</b>
<b>Cologne Chip</b>	<b>HFC-S/S+/SP(A)</b> <b>SPCI(A)</b>	<b>UT20795-00TS</b> <b>UT20775-00TS</b>	<b>UT20795-05TS</b> <b>UT20775-05TS</b>	<b>UT20795-10TS</b> <b>UT20775-10TS</b>	<b>UT20795-50TS</b> <b>UT20775-50TS</b>	<b>UT20795-5MTS</b> <b>UT20775-5MTS</b>
<b>Lucent</b>	<b>T7234/T7250/</b> <b>T7256/T7259</b>	<b>UT20798-00TS</b> <b>UT20778-00TS</b>	<b>UT20798-05TS</b> <b>UT20778-05TS</b>	<b>UT20798-10TS</b> <b>UT20778-10TS</b>	<b>UT20798-50TS</b> <b>UT20778-50TS</b>	<b>UT20798-5MTS</b> <b>UT20778-5MTS</b>
	<b>T7903</b>	<b>UT20795-00TS</b> <b>UT20775-00TS</b>	<b>UT20795-05TS</b> <b>UT20775-05TS</b>	<b>UT20795-10TS</b> <b>UT20775-10TS</b>	<b>UT20795-50TS</b> <b>UT20775-50TS</b>	<b>UT20795-5MTS</b> <b>UT20775-5MTS</b>
<b>Mietec/Alcatel</b>	<b>MTC-20172</b> <b>MTK20276</b>	<b>UT20795-00TS</b> <b>UT20775-00TS</b>	<b>UT20795-05TS</b> <b>UT20775-05TS</b>	<b>UT20795-10TS</b> <b>UT20775-10TS</b>	<b>UT20795-50TS</b> <b>UT20775-50TS</b>	<b>UT20795-5MTS</b> <b>UT20775-5MTS</b>
<b>Mitel</b>	<b>MT8930/8931</b>	<b>UT20795-00TS</b> <b>UT20775-00TS</b>	<b>UT20795-05TS</b> <b>UT20775-05TS</b>	<b>UT20795-10TS</b> <b>UT20775-10TS</b>	<b>UT20795-50TS</b> <b>UT20775-50TS</b>	<b>UT20795-5MTS</b> <b>UT20775-5MTS</b>
<b>Motorola</b>	<b>MC145474/</b> <b>145475</b>	<b>UT20793-00TS</b> <b>UT20773-00TS</b>	<b>UT20793-05TS</b> <b>UT20773-05TS</b>	<b>UT20793-10TS</b> <b>UT20773-10TS</b>	<b>UT20793-50TS</b> <b>UT20773-50TS</b>	<b>UT20793-5MTS</b> <b>UT20773-5MTS</b>
	<b>MC145574</b>	<b>UT20798-00TS</b> <b>UT20778-00TS</b>	<b>UT20798-05TS</b> <b>UT20778-05TS</b>	<b>UT20798-10TS</b> <b>UT20778-10TS</b>	<b>UT20798-50TS</b> <b>UT20778-50TS</b>	<b>UT20798-5MTS</b> <b>UT20778-5MTS</b>
	<b>MC145575</b>	<b>UT20795-00TS</b> <b>UT20775-00TS</b>	<b>UT20795-05TS</b> <b>UT20775-05TS</b>	<b>UT20795-10TS</b> <b>UT20775-10TS</b>	<b>UT20795-50TS</b> <b>UT20775-50TS</b>	<b>UT20795-5MTS</b> <b>UT20775-5MTS</b>
<b>National</b>	<b>TP3420/3421</b>	<b>UT20795-00TS</b> <b>UT20775-00TS</b>	<b>UT20795-05TS</b> <b>UT20775-05TS</b>	<b>UT20795-10TS</b> <b>UT20775-10TS</b>	<b>UT20795-50TS</b> <b>UT20775-50TS</b>	<b>UT20795-5MTS</b> <b>UT20775-5MTS</b>
<b>SGS Thomson</b>	<b>ST5420/5421</b>	<b>UT20795-00TS</b> <b>UT20775-00TS</b>	<b>UT20795-05TS</b> <b>UT20775-05TS</b>	<b>UT20795-10TS</b> <b>UT20775-10TS</b>	<b>UT20795-50TS</b> <b>UT20775-50TS</b>	<b>UT20795-5MTS</b> <b>UT20775-5MTS</b>
<b>Infineon (Siemens)</b>	<b>PEB2080-81/-84/-</b> <b>85/-86/2186</b> <b>PSB2115/2154</b>	<b>UT20795-00TS</b> <b>UT20775-00TS</b>	<b>UT20795-05TS</b> <b>UT20775-05TS</b>	<b>UT20795-10TS</b> <b>UT20775-10TS</b>	<b>UT20795-50TS</b> <b>UT20775-50TS</b>	<b>UT20795-5MTS</b> <b>UT20775-5MTS</b>
	<b>PEB20590/20591</b> <b>PSB3081/-86/</b> <b>3186/21150</b> <b>PSB21381-84SX</b>	<b>UT20793-00TS</b> <b>UT20773-00TS</b>	<b>UT20793-05TS</b> <b>UT20773-05TS</b>	<b>UT20793-10TS</b> <b>UT20773-10TS</b>	<b>UT20793-50TS</b> <b>UT20773-50TS</b>	<b>UT20793-5MTS</b> <b>UT20773-5MTS</b>
	<b>PEB20590</b>	<b>UT20793-00TS</b> <b>UT20773-00TS</b>	<b>UT20793-05TS</b> <b>UT20773-05TS</b>	<b>UT20793-10TS</b> <b>UT20773-10TS</b>	<b>UT20793-50TS</b> <b>UT20773-50TS</b>	<b>UT20793-5MTS</b> <b>UT20773-5MTS</b>
		<b>UT20795-00TS</b> <b>UT20775-00TS</b>	<b>UT20795-05TS</b> <b>UT20775-05TS</b>	<b>UT20795-10TS</b> <b>UT20775-10TS</b>	<b>UT20795-50TS</b> <b>UT20775-50TS</b>	<b>UT20795-5MTS</b> <b>UT20775-5MTS</b>
<b>Yamaha</b>	<b>YM7405B</b>	<b>UT20795-00TS</b> <b>UT20775-00TS</b>	<b>UT20795-05TS</b> <b>UT20775-05TS</b>	<b>UT20795-10TS</b> <b>UT20775-10TS</b>	<b>UT20795-50TS</b> <b>UT20775-50TS</b>	<b>UT20795-5MTS</b> <b>UT20775-5MTS</b>

\* CMC : COMMON MODE CHOKE